

NovaPro UHD Jr

All-in-One Controller



User Manual

Change History

| Version | Release Date | Description |
|---------|--------------|--|
| V1.5.0 | 2024-07-17 | <ul style="list-style-type: none"> Remove the OPT input function. Remove the OPT loop function. Remove the mode selection for OPT devices. Add the description for the display of MAC address as well as the configuration and display of the gateway on the LCD screen. Updated the certifications. |
| V1.4.0 | 2024-01-08 | <ul style="list-style-type: none"> Added the description for OPT 1 and OPT 2 input. Updated the working mode of OPT 3 and OPT 4. Added the description for OPT mosaic. Added the description for the input source hot backup function. Added the description for the Ethernet port backup test. Added the description for Ethernet port backup status displayed on home screen in fiber converter mode. Added the description for DVI MOSAIC and OPT MOSAIC backup. Added the description for OPT Loop. Added the description for OPT device mode. Optimized the Mapping function. |
| V1.3.0 | 2022-12-02 | <ul style="list-style-type: none"> Updated the product rear panel picture. Added the OSD function descriptions. |
| V1.2.0 | 2021-06-01 | Changed some components on the rear panel. |
| V1.1.0 | 2019-10-09 | <p>New features:</p> <ul style="list-style-type: none"> Added the third layer (PIP2). Added the description for optical fiber port and Ethernet port statuses displayed on home screen. Added the description for 3D function. <p>Changes:</p> <p>HDMI supported HDCP 2.2.</p> <p>Deletes:</p> <p>Deleted the descriptions for Transition Effect and Effect Duration in Display Control.</p> |
| V1.0.0 | 2019-06-06 | First release |

Contents

| | |
|--|----|
| 1 Overview | 1 |
| 2 Appearance..... | 2 |
| 2.1 Front Panel | 2 |
| 2.2 Rear Panel..... | 3 |
| 2.3 Dimensions | 6 |
| 3 Applications | 7 |
| 4 Home Screen | 8 |
| 5 Menu Operations | 11 |
| 5.1 Screen Brightness | 11 |
| 5.2 Screen Settings | 11 |
| 5.2.1 Quick Configuration | 12 |
| 5.2.2 Advanced Configuration | 13 |
| 5.2.3 Save to RV Card..... | 13 |
| 5.2.4 More Settings | 13 |
| 5.3 Layer Settings | 16 |
| 5.3.1 Main Layer and PIP..... | 17 |
| 5.3.2 BKG..... | 18 |
| 5.3.3 OSD | 19 |
| 5.4 Input Settings | 20 |
| 5.4.1 Input Source..... | 20 |
| 5.4.2 Setting Input Source Resolution..... | 20 |
| 5.4.3 DVI Mosaic..... | 22 |
| 5.4.4 Set Mosaic Backup Mode..... | 23 |
| 5.4.5 Set Color Range..... | 24 |
| 5.5 Image Mosaic..... | 24 |
| 5.6 Preset Settings..... | 25 |
| 5.7 Display Control..... | 26 |
| 5.8 Advanced Functions | 27 |
| 5.8.1 HDR..... | 27 |
| 5.8.2 Low Latency..... | 28 |
| 5.8.3 OPT Mode | 28 |
| 5.8.4 3D Mode..... | 30 |
| 5.8.5 Self-Test | 30 |
| 5.9 General Settings..... | 31 |
| 5.9.1 Hot Backup..... | 31 |
| 5.9.2 Ethernet Port Backup Test | 31 |
| 5.9.3 Synchronization | 31 |

5.9.4 Fn 32

5.9.5 Output Frame Rate..... 32

5.9.6 Return to Home 32

5.9.7 About Us..... 32

5.10 Factory Reset 32

5.11 Communication Settings..... 33

 5.11.1 Communication Mode..... 33

 5.11.2 Network Settings 33

5.12 Working Mode 34

5.13 Language 35

6 Specifications 35

A 3D Function User Manual..... 36

 A.1 For Single NovaPro UHD Jr Unit..... 36

 A.2 For Multiple NovaPro UHD Jr Units..... 37

 A.3 Notes 37

1 Overview

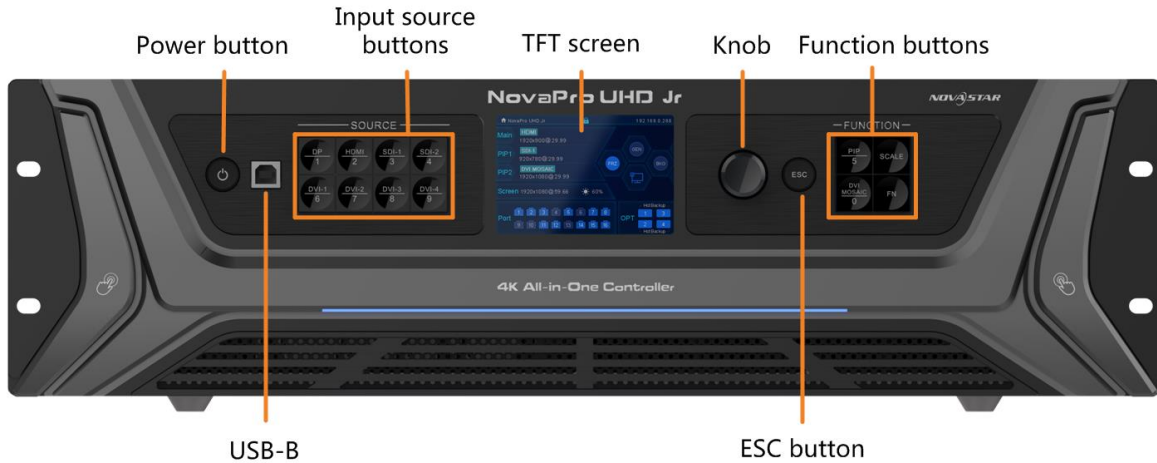
The NovaPro UHD Jr is NovaStar's new all-in-one controller that features excellent video processing capabilities, sending card functions and LED screen configurations. The NovaPro UHD Jr provides a variety of video input connectors, supporting full HD 4K×2K@60Hz image processing and sending capabilities. Additionally, the NovaPro UHD Jr supports 8K×1K@60Hz ultra-high resolution settings.

With the help of smart control software V-Can from Novastar, the NovaPro UHD Jr can enable richer image mosaic effects and faster and easier operations.

The NovaPro UHD Jr can send the processed video to the LED screen via Neutrik Ethernet ports and optical fiber ports. Thanks to its powerful video processing capabilities and sending functions, the NovaPro UHD Jr is well suited for stage control systems, conference sites, activities, exhibition sites and other high-end rental applications as well as fine-pitch LED displays.

2 Appearance

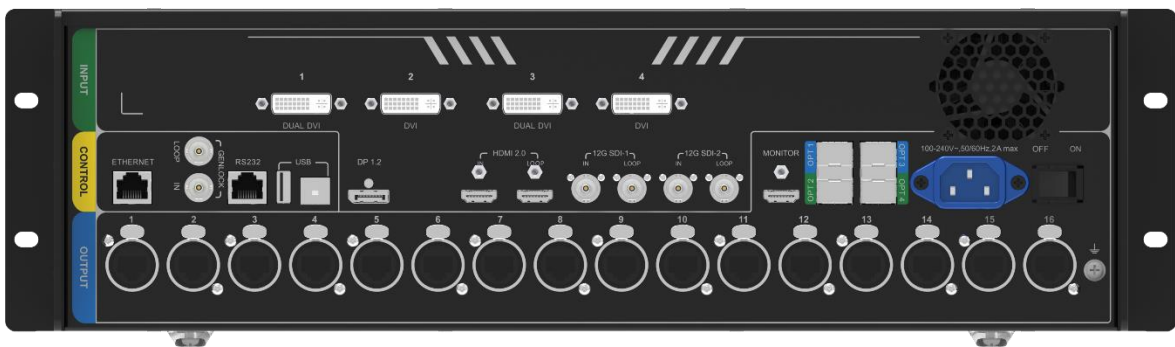
2.1 Front Panel



| Button | Description |
|----------------------|---|
| Power button | <ul style="list-style-type: none"> Power on: Press the button to power on the device. Power off: Hold down the button to pop up a dialog box, then rotate the knob to select Yes and press the knob to power off the device. |
| USB-B | For PC connection for debugging |
| Input source buttons | <ul style="list-style-type: none"> Input source switching buttons Press the button to switch the input source for the main layer. Button indicators are used to indicate the working status of the input source signal. <ul style="list-style-type: none"> White, always on: Input source is not used, and no input signal is accessed. Fast flashing blue: Input source is used, but no input signal is accessed. Blue, breathing blue: Input source is not used, but input signal is accessed. Blue, always on: Input source is used, and input signal is accessed. |
| TFT screen | Display the current device status and settings menu. |
| Knob | <ul style="list-style-type: none"> On the home screen, press the knob to enter the operation menu screen. On the operation menu screen, rotate the knob to select a menu item, and press the knob to confirm the selection or enter the submenu. When a menu item with parameters is selected, you can rotate the knob to adjust the parameters. Please note that after adjustment, you need to press the knob again to confirm the adjustment. |

| | |
|------------------|--|
| ESC button | Press the button to exit the current menu or cancel the operation. |
| Function buttons | <ul style="list-style-type: none"> • PIP: Enter the layer settings screen. • SCALE: Enable/Disable the scaling function of bottom layer. • DVI MOSAIC: Switch to DVI mosaic input source. Press it to switch the input source of main layer. • FN: This is a custom function button. The function can be customized to Synchronization, Preset Settings, Freeze, Black Out, Quick Configuration, Test Pattern, Image Quality and Main Layer. It is Synchronization by default. |

2.2 Rear Panel

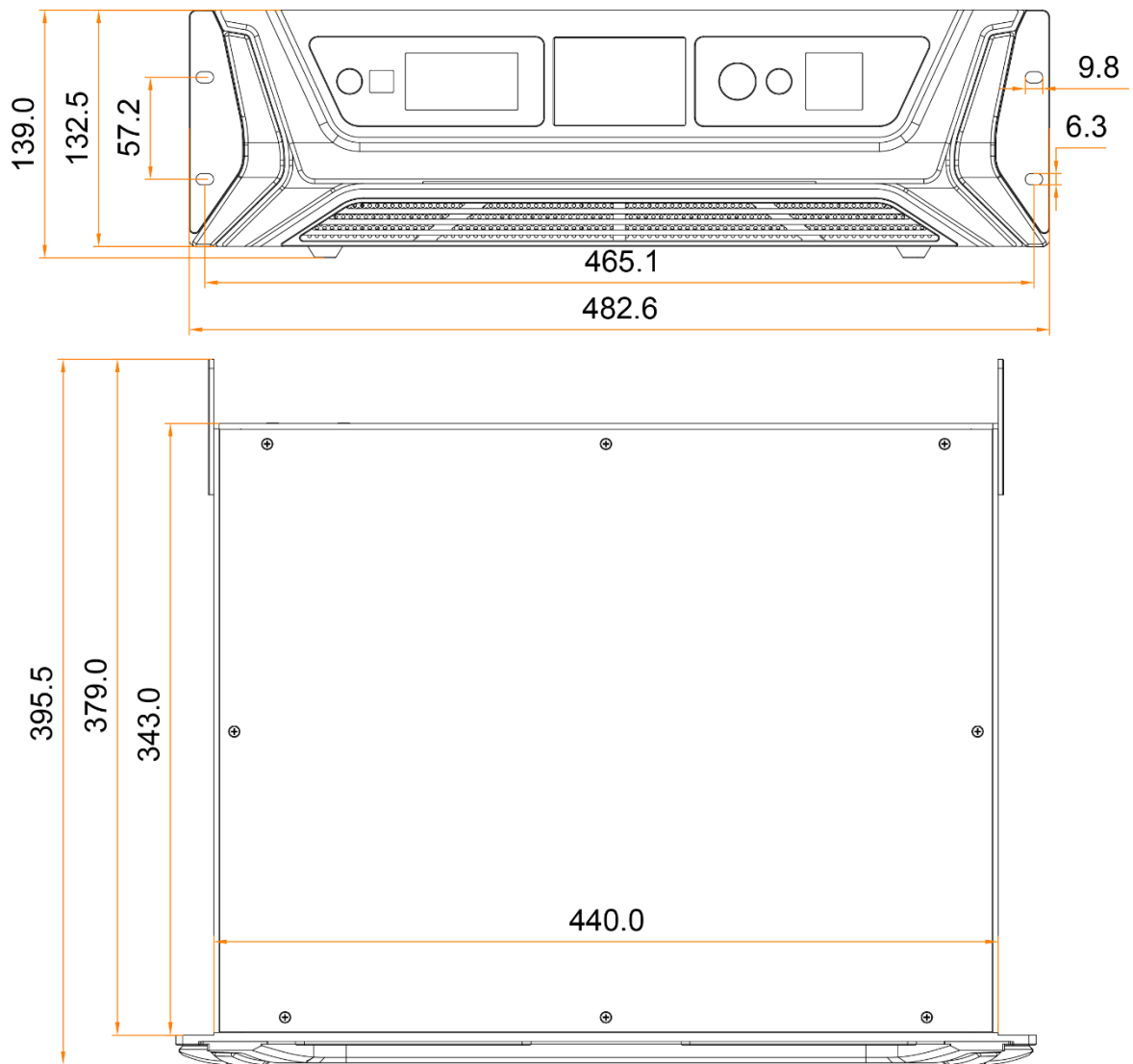


| Input | | |
|-----------|----------|---|
| Connector | Quantity | Description |
| DVI | 4 | <ul style="list-style-type: none"> • Four DVIs are all single-link DVI connectors by default. <ul style="list-style-type: none"> - 4x DVI inputs - Each DVI: Input resolution up to 2048×1152@60Hz, downward compatible - DVI input sources constitute 1 input source (DVI MOSAIC). - Max. width: 3840 pixels. Max. height: 3840 pixels • In dual-link mode. <ul style="list-style-type: none"> - DVI 1 and DVI 3 are dual-link DVI connectors while DVI 2 and DVI 4 are unavailable. - DVI 1/DVI 3: Input resolution up to 3840×1080@60Hz, downward compatible. - 2 DVI input sources constitute 1 input source (DVI MOSAIC). - Max. width: 3840 pixels. Max. height: 3840 pixels • Supports input resolution settings. • HDCP 1.4 compliant |

| | | |
|------------------|-----------------|---|
| | | <ul style="list-style-type: none"> Does not support interlaced signal inputs. |
| 12G-SDI | 2 | <ul style="list-style-type: none"> Supports ST-2082-1 (12G), ST-2081-1 (6G), ST-424 (3G) and ST-292 (HD) standard video inputs. Input resolution up to 4096×2160@60Hz, downward compatible Supports interlaced signal inputs. Does not support input resolution and bit depth settings. Maximum resolution supported: <ul style="list-style-type: none"> Max. width: 8192 pixels. Max. height: 8192 pixels |
| DP 1.2 | 1 | <ul style="list-style-type: none"> Input resolution up to 3840×2160@60Hz, downward compatible HDCP 1.3 compliant Supports input resolution settings. Maximum resolution supported: <ul style="list-style-type: none"> Max. width: 8192 pixels. Max. height: 8192 pixels Does not support interlaced signal inputs. |
| HDMI 2.0 | 1 | <ul style="list-style-type: none"> Input resolution up to 3840×2160 @60Hz, downward compatible HDCP 2.2 compliant Supports input resolution settings. Maximum resolution supported: <ul style="list-style-type: none"> Max. width: 8192 pixels. Max. height: 8192 pixels Does not support interlaced signal inputs. |
| Output | | |
| Connector | Quantity | Description |
| Ethernet port | 16 | <ul style="list-style-type: none"> 16x Neutrik Gigabit Ethernet output connectors, allowing for a loading capacity of up to 10,400,000 pixels. Maximum loading capacity: <ul style="list-style-type: none"> Max. width: 16384 pixels, max. height: 8192 pixels Maximum loading capacity of a single Ethernet port: <ul style="list-style-type: none"> 8-bit input source: 650,000 pixels. 10-bit/12-bit input source: 320,000 pixels. |
| OPT 1-4 | 4 | <p>10G optical connectors</p> <p>Copy and hot backup modes are available when four OPT ports are all used for output.</p> <ul style="list-style-type: none"> OPT 1 transmits data of Ethernet ports 1-8. |

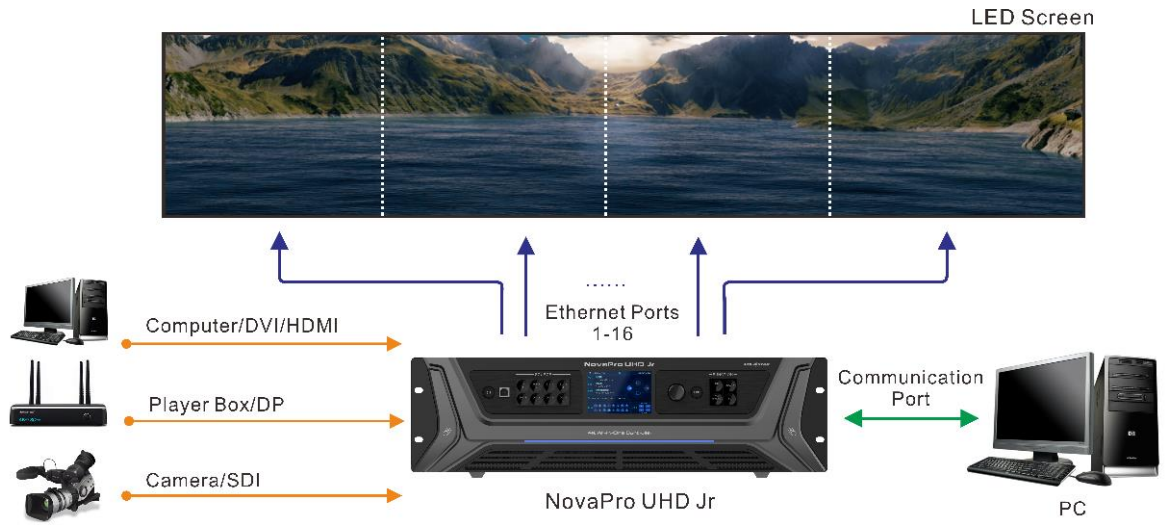
| | | |
|------------------|-----------------|--|
| | | <ul style="list-style-type: none"> OPT 2 transmits data of Ethernet ports 9–16. OPT 3 serves as the copy/hot backup for OPT 1. OPT 4 serves as the copy/hot backup for OPT 2. |
| HDMI 2.0 LOOP | 1 | <ul style="list-style-type: none"> HDMI loop output Only 1 level of device cascading supported HDCP 2.2 compliant EDID management supported |
| 12G-SDI LOOP | 2 | SDI loop output |
| MONITOR | 1 | <ul style="list-style-type: none"> An HDMI connector dedicated for output monitoring Resolution up to 1920×1080@60Hz |
| Control | | |
| Connector | Quantity | Description |
| ETHERNET | 1 | Connect to the PC for communication, or connect to the Web for device control. |
| USB (Type-B) | 1 | <ul style="list-style-type: none"> Connect to the PC for device control. Used as the input connector to connect a NovaPro UHD Jr unit for image mosaic |
| USB (Type-A) | 1 | Used as the output connector to connect a NovaPro UHD Jr unit for image mosaic |
| GENLOCK IN-LOOP | 1 | Connect to a synchronization signal to synchronize all the connected NovaPro UHD Jr units. |
| RS232 | 1 | Connect to the central control device. |

2.3 Dimensions



Tolerance: ± 0.3 Unit: mm

3 Applications



4 Home Screen

Figure 4-1 Home screen

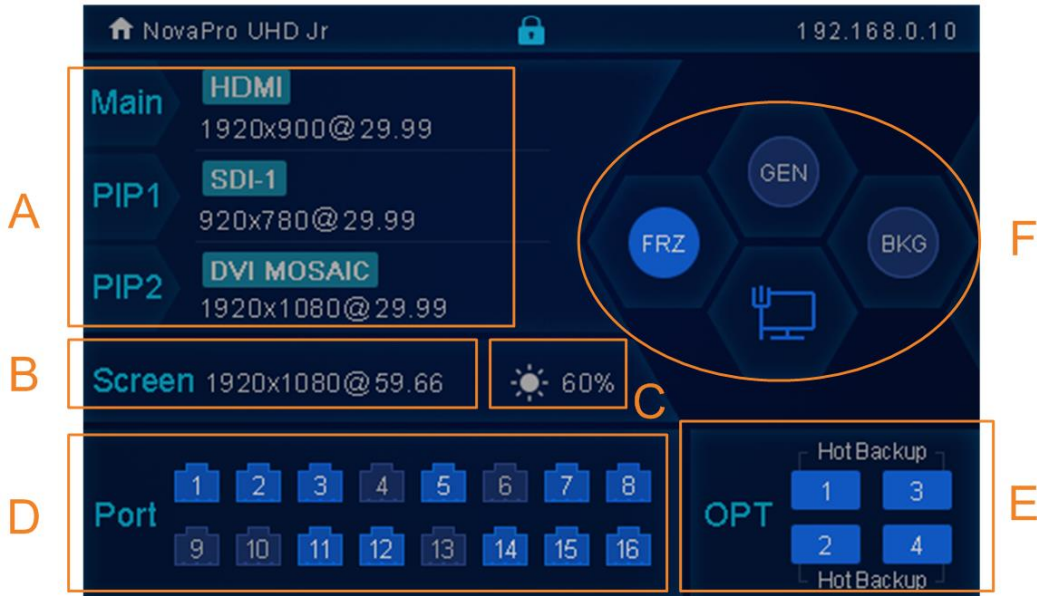


Table 4-1 Home screen descriptions

| Area | Icon | Description |
|------|------|--|
| A | | Denotes the layer is active and displays the layer input source name and resolution. |
| | | Denotes the layer is inactive. |
| B | | Displays the resolution and frame rate of the configured screen. |
| C | | Displays the screen brightness. |
| D | | The device is in video controller mode and this Ethernet port is connected. |
| | | This Ethernet port is not connected. |
| | | This Ethernet port is connected and serves as the output backup port. |
| E | | The OPT mode is set to Hot Backup , optical fiber ports 3/4 backup the data of optical fiber ports 1/2. |
| | | The OPT mode is set to Copy , optical fiber ports 3/4 copy the data of optical fiber ports 1/2. |

| | | | |
|---|-----------------|--|--|
| F | Synchronization | | The synchronization function is turned on, and synchronization succeeded. |
| | | | The synchronization function is turned off. |
| | | | The synchronization function is turned on, and synchronization is being performed. |
| | | | The synchronization function is turned on, but synchronization failed. |
| | Display control | | The LED screen displays the black screen. |
| | | | The LED screen displays the selected test pattern. |
| | | | The LED screen displays the current input source normally. |
| | | | The output image is frozen. |
| | BKG | | The BKG function is turned on. |
| | | | The BKG function is turned off. |
| | Communication | | The current device communication mode is USB Preferred. |
| | | | The current device communication mode is LAN Preferred. |
| | | | The current device is not connected to the control PC. |

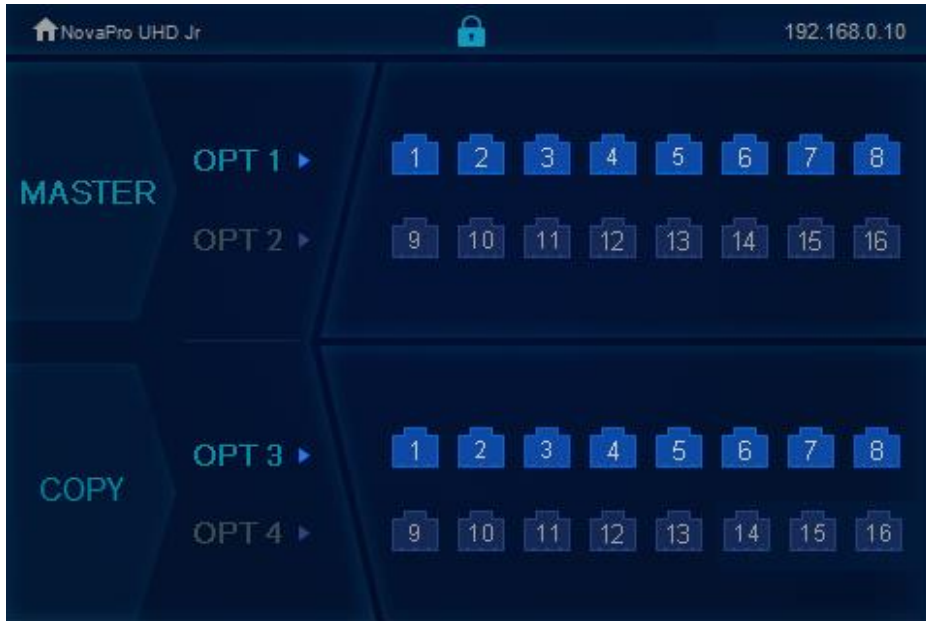
Ethernet Port Statuses

Rotate the knob clockwise on the home screen to display the optical fiber port working statuses as shown in the below figure.

Note:

This page is available when the OPT ports are connected.

Figure 4-2 Optical fiber port statuses – Copy



- Master > OPT 1/OPT 2: Display the connection and backup statuses of the Ethernet ports of on the fiber converter connected to the NovaPro UHD Jr.
- Copy > OPT 3/OPT 4: OPT 3 and OPT 4 work in **Copy** mode. Display the connection and backup statuses of the Ethernet ports on the fiber converter connected to the NovaPro UHD Jr.

Figure 4-3 Optical fiber port statuses – Hot backup



- Master > OPT 1/OPT 2: Display the connection and backup statuses of the Ethernet ports on the fiber converter connected to the NovaPro UHD Jr.
- Backup > OPT 3/OPT 4: OPT 3 and OPT 4 work in **Backup** mode. Display the connection and backup statuses of the Ethernet ports on the fiber converter connected to the NovaPro UHD Jr.

5 Menu Operations

Button descriptions:

Knob

On the home screen, pressing the knob enters the operation menu screen.

On the operation menu screen, rotate the knob to select a menu item, and press the knob to confirm the selection or enter the submenu.

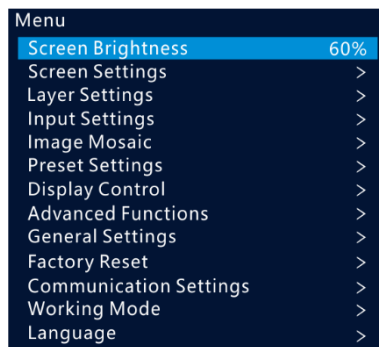
When a menu item with parameters is selected, you can rotate the knob to adjust the parameters. Please note that after adjustment, you need to press the knob again to confirm the adjustment.

ESC: Press the button to exit the current menu or cancel the operation.

5.1 Screen Brightness

You can adjust the screen brightness in an eye-friendly way according to the current ambient brightness. Besides, appropriate adjustment of screen brightness can extend the service life of the LED screen.

Figure 5-1 Screen brightness



- Step 1 Press the knob to enter the device menu.
- Step 2 Select **Screen Brightness** and press the knob to confirm the selection.
- Step 3 Rotate the knob to adjust the brightness value, and the LED screen will display the effect in real-time. Then press the knob to apply the set brightness when you are satisfied with it.

5.2 Screen Settings

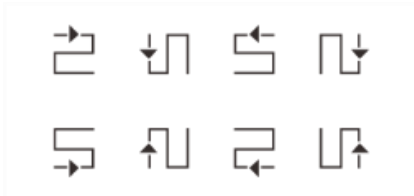
You can configure the screen to make it display the whole image correctly.

The options are **Quick Configuration** and **Advance Configuration**.

5.2.1 Quick Configuration

Preconditions

- LED screen must be a regular screen.
- Cabinets of the screen must be regular cabinets with the same resolution.
- The following data flow settings are supported. During data flow settings, you must ensure that the physical connection of each port is along the same direction and downward to next one.



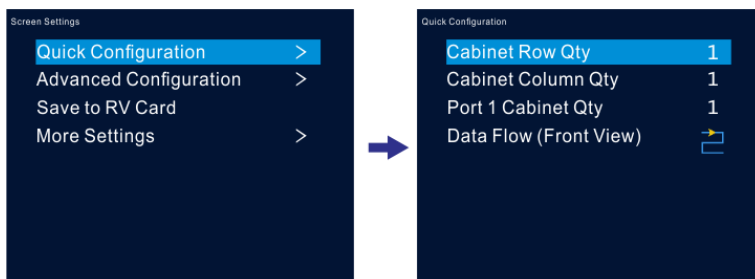
- During data flow settings, you must ensure that the Ethernet Port 1 is at the beginning position of the whole physical connection.

Procedure

Step 1 Power on the LED screen.

Step 2 Rotate the knob to choose **Screen Settings > Quick Configuration**, and press it to enter its submenu.

Figure 5-2 Quick configuration



Step 3 Set **Cabinet Row Qty** and **Cabinet Column Qty** according to the actual row and column quantities of the cabinets.

Step 4 Rotate the knob to **Port 1 Cabinet Qty** to set the quantity of the cabinets loaded by Ethernet port 1.

Step 5 Rotate the knob to **Data Flow (Front View)** and press it, then select an appropriate physical connection mode of the cabinets.

During data flow settings, you can view the real-time effects of different data flow settings on LED display by rotating the knob. When you are satisfied with the LED display image, press the knob to save the settings; when you are not satisfied, press **ESC** button to exit the current operation and the settings will not be saved.

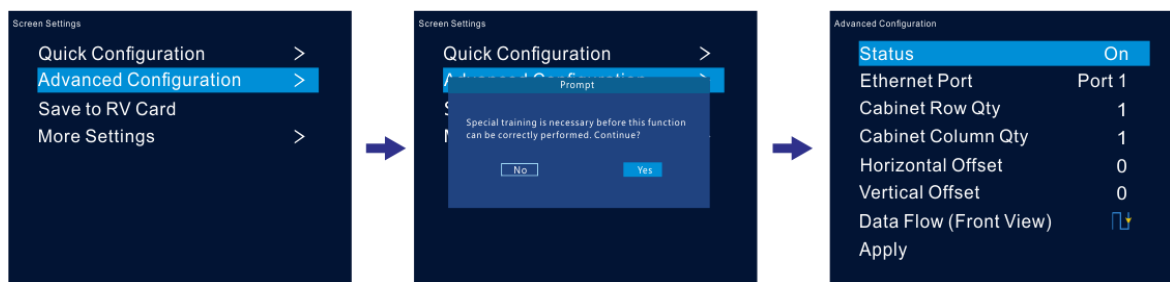
5.2.2 Advanced Configuration

You can set the cabinet row and column quantities, horizontal offset, vertical offset and data flow of the cabinets loaded by a single Ethernet port.

Procedure

- Step 1 Press the knob to enter the device menu.
- Step 2 Rotate the knob to choose **Screen Settings > Advanced Configuration**, and press it to enter its submenu.
- Step 3 Turn on the advanced configuration function, and then set the cabinet row and column quantities, horizontal offset, vertical offset and data flow for the target Ethernet port.

Figure 5-3 Advanced configuration



5.2.3 Save to RV Card

You can send and save the screen configuration to the receiving card. The configuration data will not be lost after the device is powered off.

5.2.4 More Settings

- Step 1 Press the knob to enter the device menu.
- Step 2 Rotate the knob to choose **Screen Settings > More Settings**, and press it to enter its submenu.

Mapping

You can turn on this function to display the sequence numbers of Ethernet ports and cabinets.

Figure 5-4 Mapping



Example: "S:01" stands for the sending card number, "P:05" stands for the Ethernet port number and "#001" stands for the cabinet number.

Note:

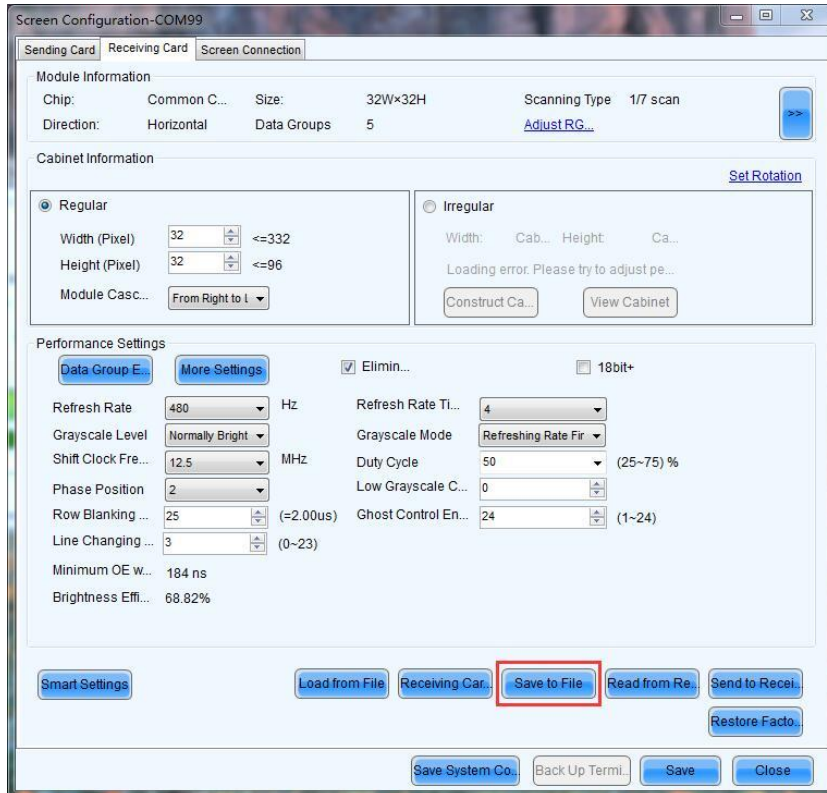
The receiving card employed by the system must support the Mapping function.

Load RCFGx Files

After the LED screen is powered on, if a certain cabinet or the entire LED screen is not lit, you can load the receiving card configuration files (namely RCFGx files) that have been configured on NovaLCT software to the NovaPro UHD Jr.

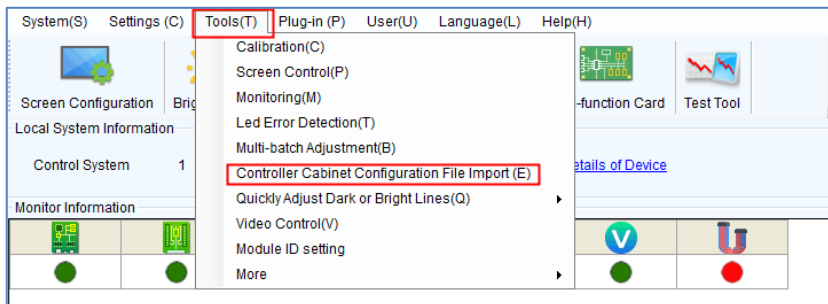
- Step 1** (Optional) After you have configured the screen on NovaLCT, click **Save to File** under the **Receiving Card** tab to save the configuration file to PC.

Figure 5-5 Save receiving card configuration file



Step 2 Choose **Tools > Controller Cabinet Configuration File Import** to enter the controller cabinet configuration file importing page.

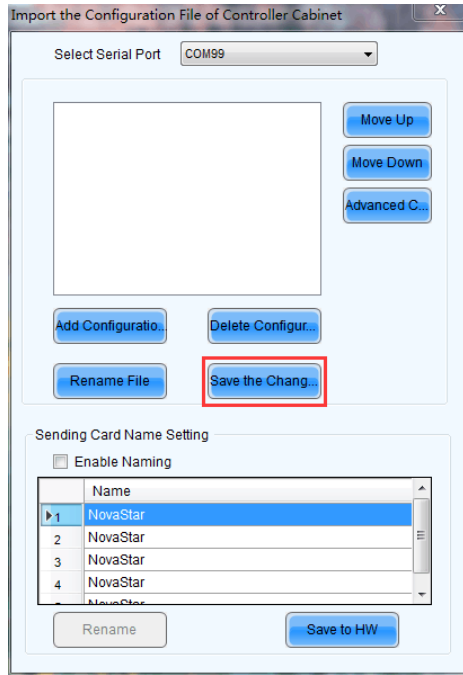
Figure 5-6 Importing controller cabinet configuration file



Step 3 Click **Add Configuration File** to select the target file (*.rcfgx/*.rcfg) from your PC, and then click **Open**.

Step 4 Click **Save the Change to HW** to save the configuration file to the NovaPro UHD Jr.

Figure 5-7 Saving configuration file to NovaPro UHD Jr



Note:

The configuration file for irregular cabinet is not supported.

LED Screen Color

You can adjust the screen color and the LED screen will display the effect in real-time.

Table 5-1 Screen color parameters

| Parameter | Description |
|-------------------|--|
| Color temperature | You can set the color to Standard , Cool , Warm and Custom . Custom allows you to adjust individual R, G or B value. |
| Gamma | The range is 1.0–4.0 and the stepping is 0.1. |

Figure 5-8 Color temperature effect



5.3 Layer Settings

Step 1 Press the knob to enter the device menu.

Step 2 Rotate the knob to select **Layer Settings** and press the knob to enter the layer settings screen where you can set the followings.

- Main layer
- PIP1 and PIP 2
- BKG
- OSD

5.3.1 Main Layer and PIP

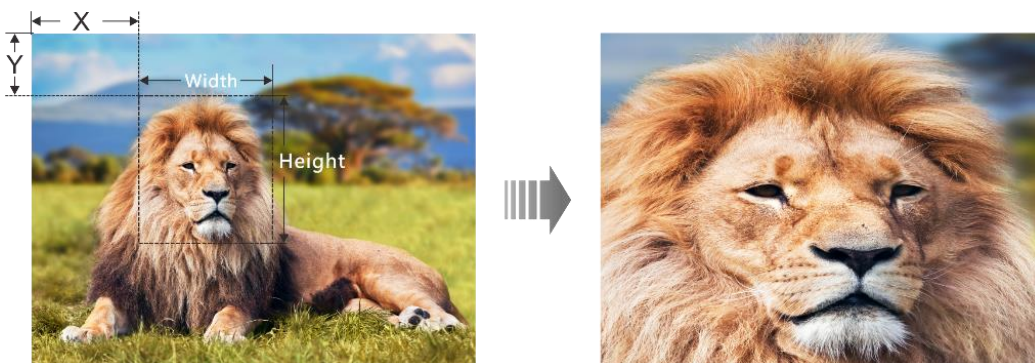
| Menu | Description |
|--------------------------|--|
| Status | The status of the selected layer: On and Off Note: Press the PIP button in FUNCTION area on the device front panel to enter the layer settings screen. |
| Input Source | The input source of the layer Note: Press the input source button in SOURCE area on the device front panel to select the input source for the main layer. |
| Backup Source | The backup source of the layer Note: The primary input source of the current layer cannot be set as the backup one. |
| Primary Source Preferred | <ul style="list-style-type: none"> • On: The primary source will always be used if there is a signal. When the primary source fails, the layer input source is switched to the backup one automatically. Once the primary source resumes, the layer input source seamlessly switches back to it. • Off: The layer input source will be switched to the primary source only when the backup one fails and the primary one has a signal. |
| Scaling Mode | The options are Full Screen, Pixel to Pixel and Custom. |
| H Width | The horizontal width of the layer The range is -32768~32768. |
| V Height | The vertical height of the layer The range is -32768~32768. |
| Initial X | The initial horizontal coordinate of the layer |
| Initial Y | The initial vertical coordinate of the layer |
| Input Crop | The function of cropping the input source image and displaying it in full screen Status: You can turn on or turn off this function for the selected layer. H Width: The horizontal width of the current input source. If no input source is detected, the default value is 1920. V Height: The vertical height of the current input source. If no input source is detected, the default value is 1080. Initial X: The horizontal initial coordinate of the cropped part upon the current input |

| | |
|----------|--|
| | <p>source. The range is 0–horizontal width of input source and the default value is 0.</p> <p>Initial Y: The vertical initial coordinate of the cropped part upon the current input source. The range is 0–vertical height of input source and the default value is 0.</p> |
| Priority | <p>The layer priority. The options are 1, 2 and 3.</p> <p>1: Send the layer to the back.</p> <p>2: Place the layer in the middle.</p> <p>3: Bring to the layer to the front.</p> |
| Reset | <p>Reset all the layer parameters to default settings.</p> |

Figure 5-9 Layer parameter descriptions



Figure 5-10 Input crop



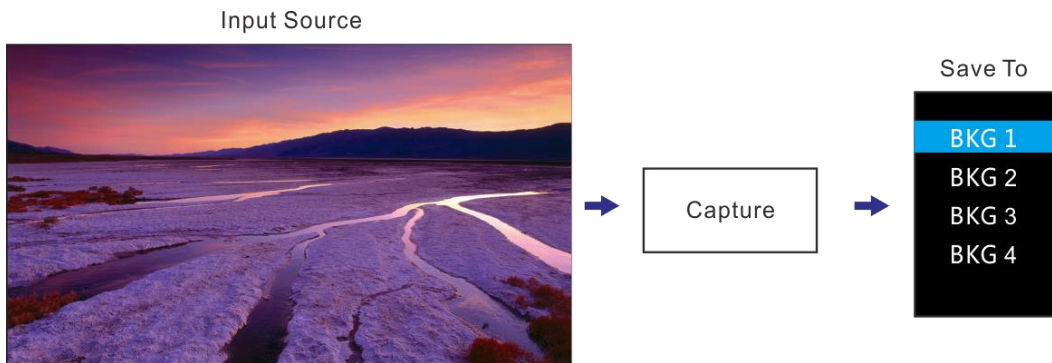
5.3.2 BKG

You can set the background for the displayed image. The BKG is located at the back.

| Menu | Description |
|--------|---|
| Status | The status of the BKG: On and Off (default) |
| Type | The options area Pure Color and Image . |

| | |
|----------------|--|
| Pure Color BKG | You can adjust the individual R, G or B value to set a pure color BKG. |
| Capture | <ul style="list-style-type: none"> Source: Select an input source. Save To: Set the save location of the captured image. The options include BKG 1 / BKG 2 / BKG 3 / BKG 4. Apply: Save the captured image to the selected save location. At most 4 BKG images are supported. |

Figure 5-11 Capturing input source image



5.3.3 OSD

The NovaPro UHD Jr supports at most 8 OSD images. Each time only one OSD can be used. OSD has the highest priority which cannot be changed.

Before you add OSD, please make sure you have imported the OSD images or edited the OSD text in V-Can.

- OSD image size: Max. 4096×2160 or 8192×1080
- OSD image format: PNG, JPG, JPEG, BMP

- Step 1 Press the knob to enter the main menu screen.
- Step 2 Rotate the knob to select **Layer Settings > OSD** to enter the OSD settings screen.
- Step 3 Perform the OSD-related settings as required.

Table 5-2 OSD parameters

| Parameter | Description |
|------------|---|
| Status | Turn on or turn off the OSD. The default options is Off . |
| OSD Select | The options include OSD1, OSD2, OSD3, OSD4, OSD5, OSD6, OSD7 and OSD8 . |
| Initial X | The initial horizontal coordinate of the OSD The value ranges from 0 to 16384 and defaults to 0 . |
| Initial Y | The initial vertical coordinate of the OSD The value ranges from 0 to 16384 and defaults to 0 . |

| Parameter | Description |
|-----------|---------------------------------|
| H Width | The horizontal width of the OSD |
| V Height | The vertical height of the OSD |

Notes:

You cannot adjust the OSD size via the device front panel screen. If you do need to resize the OSD, please adjust it when you import it in V-Can.

For the OSD text, you can set its text style and scrolling mode. These settings can only be carried out in V-Can.

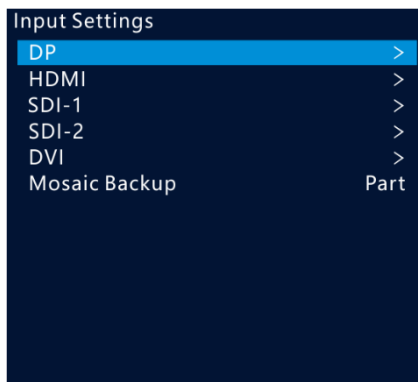
5.4 Input Settings

5.4.1 Input Source

The NovaPro UHD Jr supports DP, HDMI, SDI-1, SDI-2 and DVI input connectors.

Rotate the knob to select the desired input source and press the knob to enter the input source resolution menu.

Figure 5-12 Selecting input source

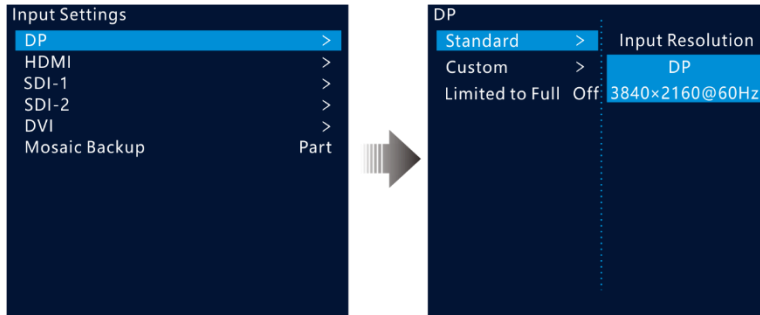


5.4.2 Setting Input Source Resolution

You can adjust the resolution and frame rate of the input source through the following two ways.

- Standard resolution
- Custom resolution

Figure 5-13 Setting input source resolution



Note:

SDI input source does not allow for resolution adjustments.

Standard Resolution

You can select a standard resolution and frame rate. Then rotate the knob to select **Apply** and press the knob to make the settings take effect.

Figure 5-14 Standard resolution

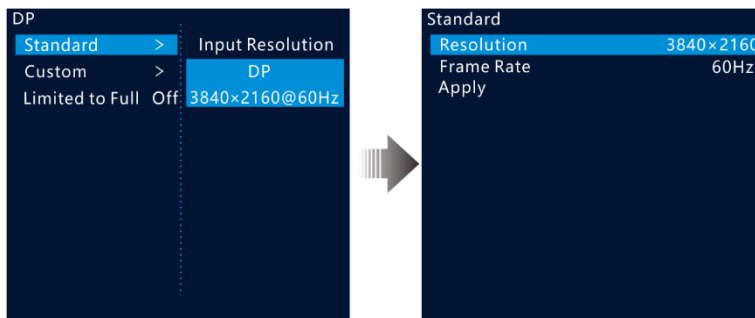


Table 5-3 Standard connector resolutions

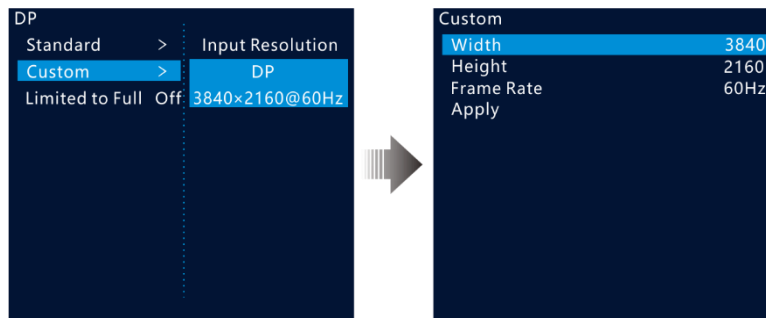
| Standard resolutions | DP 1.2 | HDMI 2.0 | Dual-DVI | Single-DVI |
|---|--------|----------|----------|------------|
| 1024×768@ (48/50/59.94/60/75/85) Hz | √ | √ | √ | √ |
| 1280×720@ (23.98/24/25/29.97/30/48/50/59.94/60) Hz | √ | √ | √ | √ |
| 1280×1024@ (48/50/59.94/60/75/85) Hz | √ | √ | √ | √ |
| 1364×768@ (50/59.94/60) Hz | × | √ | × | × |
| 1366×768@ (50/59.94/60) Hz | √ | × | √ | √ |
| 1440×900@ (60/75/85) Hz | √ | √ | √ | √ |
| 1600×1200@ (48/50/59.94/60) Hz | √ | √ | √ | √ |
| 1680×1050@60Hz | √ | √ | √ | √ |
| 1920×1080@ (23.98/24/25/29.97/30/48/50/59.94/60) Hz | √ | √ | √ | √ |

| Standard resolutions | DP 1.2 | HDMI 2.0 | Dual-DVI | Single-DVI |
|--------------------------------------|--------|----------|----------|------------|
| 1920×1200@ (50/59.94/60) Hz | √ | √ | √ | √ |
| 2048×1080@ (30/48/50/59.94/60) Hz | √ | √ | √ | √ |
| 2048×1152@ (30/60) Hz | √ | √ | √ | √ |
| 2560×1080@ (50/59.94/60) Hz | √ | √ | √ | × |
| 2560×1600@ (50/59.94/60) Hz | √ | √ | √ | × |
| 2560×1600@120Hz | √ | √ | × | × |
| 3840×1080@30Hz | √ | √ | √ | √ |
| 3840×1080@ (50/59.94/60) Hz | √ | √ | √ | × |
| 3840×1080@120Hz | √ | √ | × | × |
| 3840×2160@ (23.98/24/25/29.97/30) Hz | √ | √ | √ | × |
| 3840×2160@ (50/59.94/60) Hz | √ | √ | × | × |

Custom Resolution

Rotate the knob to set a custom width, height and frame rate. Then rotate the knob to select **Apply** and press the knob to make the settings take effect. If you do not press the knob, the settings will not take effect.

Figure 5-15 Custom resolution



5.4.3 DVI Mosaic

- Step 1 Rotate the knob to choose **Input Settings > DVI**.
- Step 2 Rotate the knob to set the DVI input mode to **Single Link** or **Dual Link**. The connector working mode is shown in below.

Figure 5-16 Single link mode

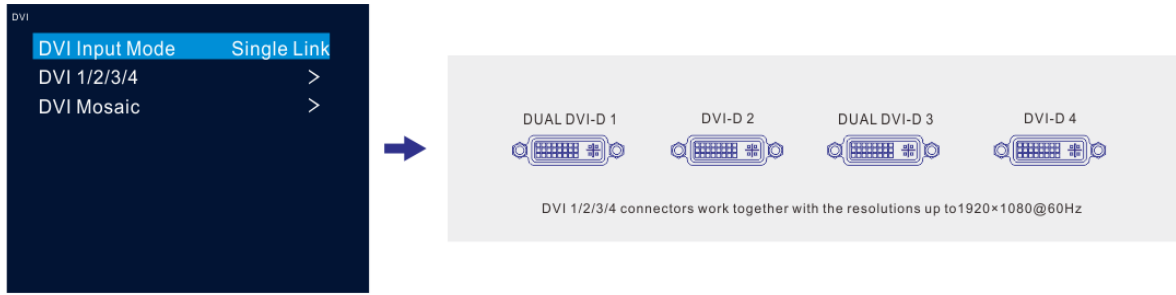
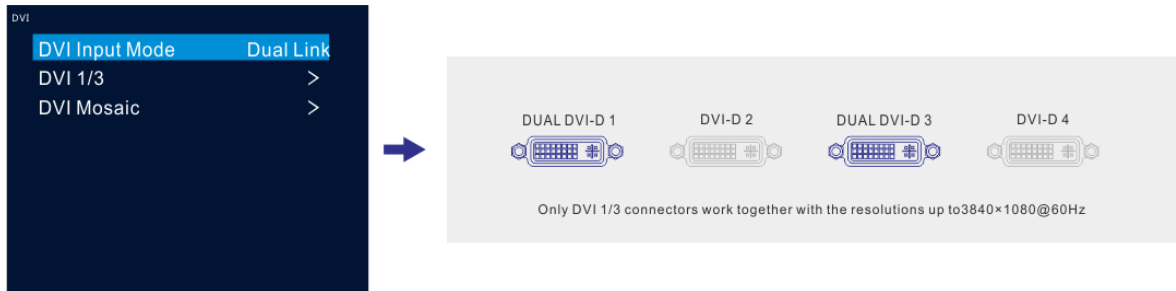




Figure 5-17 Dual link mode



Step 3 In single link mode, the resolutions of DVI 1, 2, 3 and 4 are adjusted together. In dual link mode, the resolutions of DVI 1 and 3 are adjusted together. For resolution adjustment, please refer to [5.4.2 Setting Input Source Resolution](#).

Step 4 Rotate the knob to select **DVI Mosaic** and press the knob to enter the DVI mosaic settings menu.

| Menu | Description |
|--------|---|
| Layout | Set the mosaic layout for 4 DVI connectors. Single link mode supports 7 layouts:  , Dual link mode supports 2 layouts:  . |
| Width | Adjust the width of the individual mosaic area. Single link: The default width is 1920 and the range is 64–3840. Dual link: The default width is 3840 and the range is 64–3840. |
| Height | Adjust the height of the individual mosaic area. Single link: The default width is 1080 and the range is 64–3840. Dual link: The default width is 1080 and the range is 64–3840. |
| Apply | Make the settings take effect. |

5.4.4 Set Mosaic Backup Mode

Rotate the knob to set the Mosaic backup mode.

- Part: When one or multiple DVI sources in the DVI mosaic group are abnormal, these sources are not displayed and other DVI sources are displayed normally.

- Group: When one or multiple DVI sources in the DVI mosaic group are abnormal, the backup device will replace the primary device to output the image.

Notes:

Only one interlaced SDI input is supported in DVI mosaic mode of four connectors.

Mosaic Backup is set to **Part** by default. In device backup mode, please set **Mosaic Backup** to **Group** for both the primary and backup devices to ensure the output image can be displayed normally.

5.4.5 Set Color Range

The input source color range includes RGB Full and RGB Limited. This function automatically converts the color range of the input source from RGB Limited to RGB Full, allowing for more accurate video processing.

- Off: Do not convert RGB Limited to RGB Full.
- On: Convert RGB Limited to RGB Full. You are advised to turn on this function when the input source has a limited color range.

5.5 Image Mosaic

When the pixel count of the LED screen is larger than the loading capacity of a single NovaPro UHD Jr unit, the image mosaic function is required. The total loading capacity of all cascaded NovaPro UHD Jr units equals to the total pixel count of the LED screen.

Figure 5-18 Image mosaic parameters

| Image Mosaic | |
|---------------------|------|
| Status | On |
| Total H Pixels | 7680 |
| Total V Pixels | 4320 |
| Load Area Width | 3840 |
| Load Area Height | 2160 |
| Load Area Initial X | 0 |
| Load Area Initial Y | 0 |

Example: If the pixel count of the LED screen is 7680×4320 which exceeds the loading capacity of a single NovaPro UHD Jr unit, 4 NovaPro UHD Jr units are used together for image mosaic. The connections are shown in the below figure.

Figure 5-19 Connections

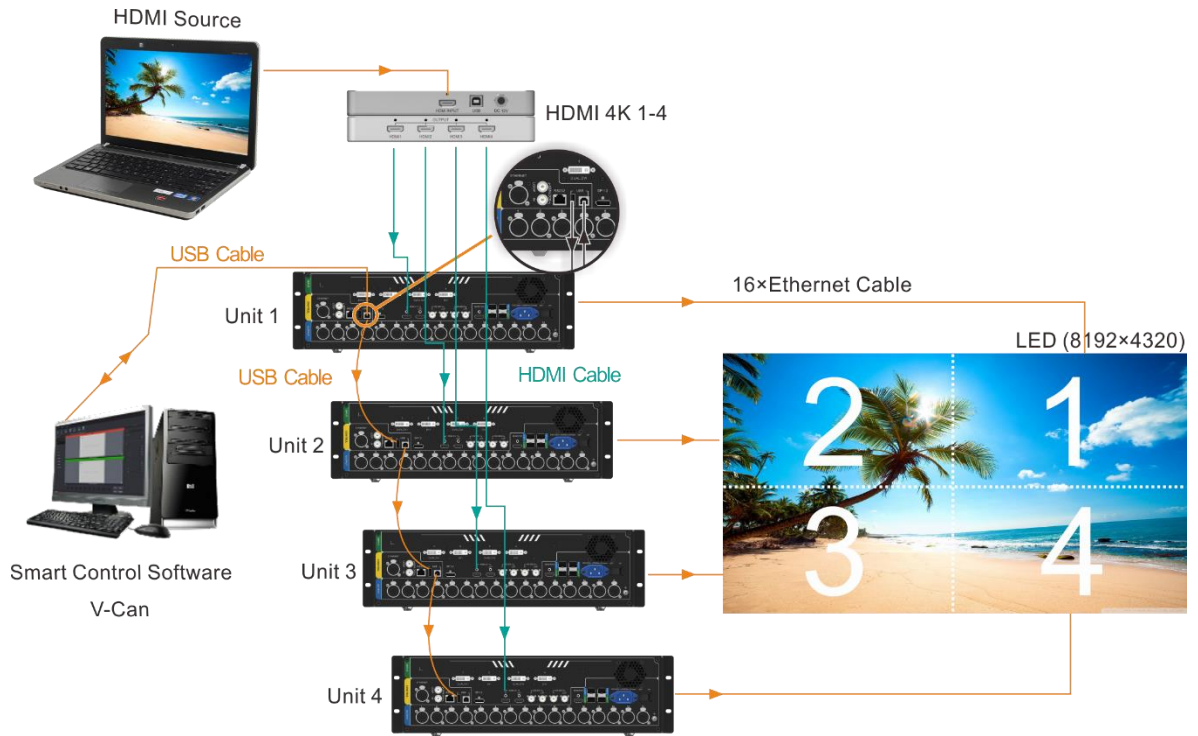


Table 5-4 Parameter settings

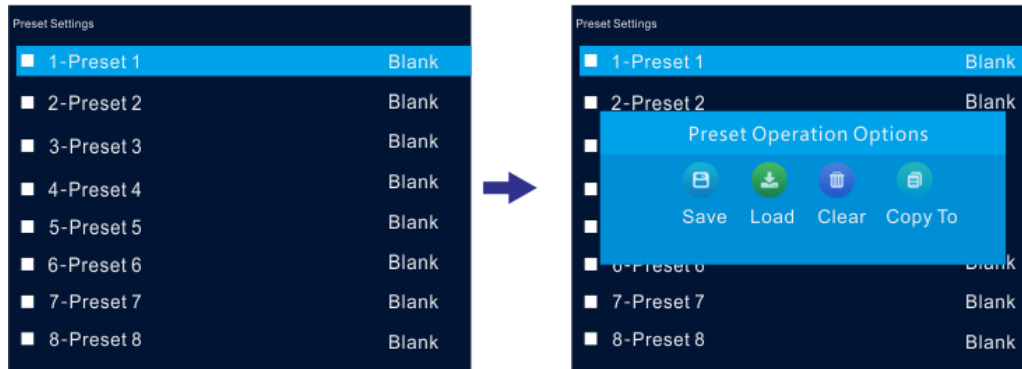
| Device No. | Load Area Width | Load Area Height | Load Area Initial X | Load Area Initial Y |
|------------|-----------------|------------------|---------------------|---------------------|
| 1 | 3840 | 2160 | 3840 | 0 |
| 2 | 3840 | 2160 | 0 | 0 |
| 3 | 3840 | 2160 | 0 | 2160 |
| 4 | 3840 | 2160 | 3840 | 2160 |

5.6 Preset Settings

The NovaPro UHD Jr supports 10 user presets. User can save, load and clear the configured presets.

- Step 1 Rotate the knob to select **Preset Settings** and press the knob to enter the submenu.
- Step 2 Rotate the knob to select the desired preset and press the knob to pop up a dialog box. In the box, four preset operations are provided: **Save, Load, Clear** or **Copy To**.

Figure 5-20 Preset operations



- Save: Save the current layer layout and settings to the target preset.
- Load: Load the selected preset to current lay layout.
- Clear: Clear all the contents in the selected preset.
- Copy To: Copy the current preset to the target preset.

Note:

If the target preset has data, **Copy To** operation will overwrite the existing data in the preset.

You can also press the number button on the front panel to quickly load a preset. For example, press the button 1 to load 1-Preset 1 and press the button 2 to load 2-Preset 2, and so on.

5.7 Display Control

This function is used to control the display. You can set the display to go black, freeze the display, display a test pattern, or go to normal display.

Step 1 Press the knob to enter the device menu.

Step 2 Rotate the knob to select **Display Control** and press the knob to enter the display control screen where you can set the followings.

- Normal: Display the content of current input source normally.
- Freeze: Freeze the current frame of the output image.
- Black Out: Make the screen go black.
- Test Pattern: Test the display effect and working status of the LED screen. Test patterns include **Pure Color, Gradient, Grid, Brightness, Spacing** and **Speed**.
- Image Color: Adjust the color of the output image and the LED screen will display the effect in real-time.

Table 5-5 Image color parameters

| Menu | Description |
|------------|---|
| Brightness | The range is 0–100 and the stepping is 1. |

| | |
|------------|--|
| Contrast | The range is 0–100 and the stepping is 1. |
| Saturation | The range is 0–100 and the stepping is 1. |
| Hue | The range is -180–180 and the stepping is 1. |

5.8 Advanced Functions

Advanced functions include HDR, low latency, OPT mode, 3D mode and self-test settings.

5.8.1 HDR

HDR is the abbreviation for High-Dynamic Range. HDR function can greatly enhance the display image quality, allowing for a more clear and vivid image when the device is used together with NovaStar A8s/A10s receiving cards.

Figure 5-21 System architecture

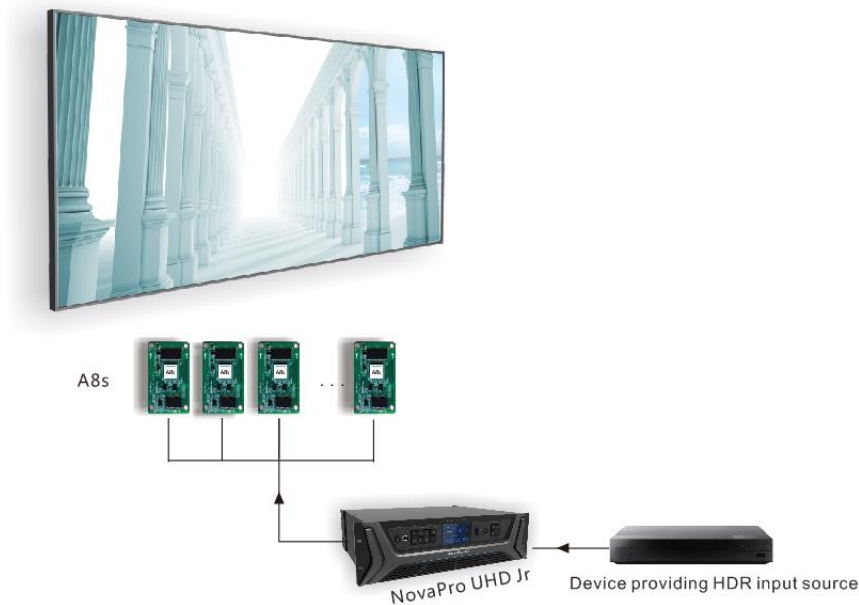


Figure 5-22 HDR effect



Step 1 Choose **Advanced Functions** > **HDR** > **Status** to enable the HDR function.

Step 2 Rotate the knob to adjust the value of each parameter to improve the image quality.

| Menu | Description |
|------------------------|---|
| Peak Screen Brightness | Adjust the screen brightness under normal operation. The range is 100–1000 and the default setting is 1000 . |
| Ambient Brightness | Display the ambient brightness. The range is 0–200 and the default setting is 30 . |
| Low Grayscale Mode | The range is 0–50 and the default setting is 15 . |

Step 3 (Optional) Select **Reset** to reset all the parameters to default values.

Notes:

Only HDR10 input source is supported.

When HDR function is enabled, the output loading capacity will be reduced by 50%.

5.8.2 Low Latency

Low latency reduces the input source signal latency from input to output image of the NovaPro UHD Jr. This function can realize 2 frame delay from sending card to receiving card when the device is used together with NovaStar Armor series receiving cards.

Note:

The loading width of a single Ethernet port should be no greater than 512 pixels when low latency function is used.

The supported Armor series receiving cards include A8, A8s, A9s and A10s.

5.8.3 OPT Mode

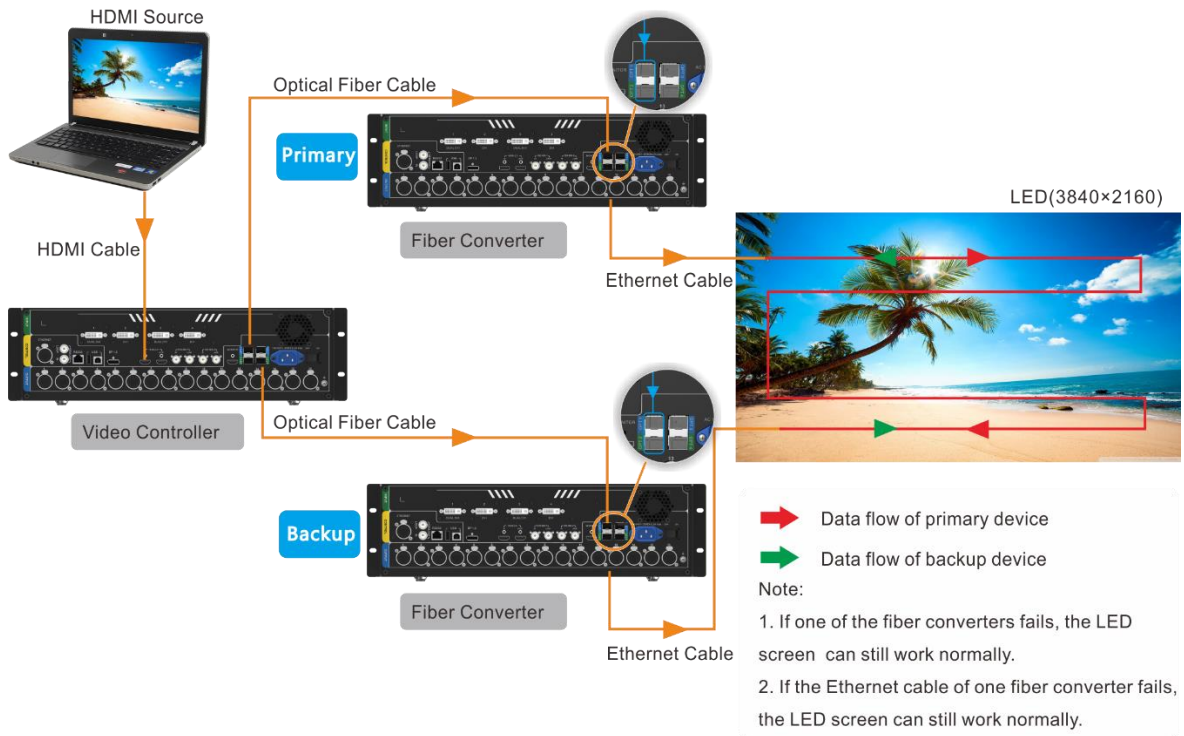
The NovaPro UHD Jr supports two OPT modes: **Hot Backup** (default) and **Copy**.

- Hot Backup: Optical fiber ports 3/4 backup the data of optical fiber ports 1/2.
- Copy: Optical fiber ports 3/4 copy the data of optical fiber ports 1/2.

Hot Backup

Step 1 Perform the hardware connections for hot backup mode.

Figure 5-23 Connections for hot backup mode

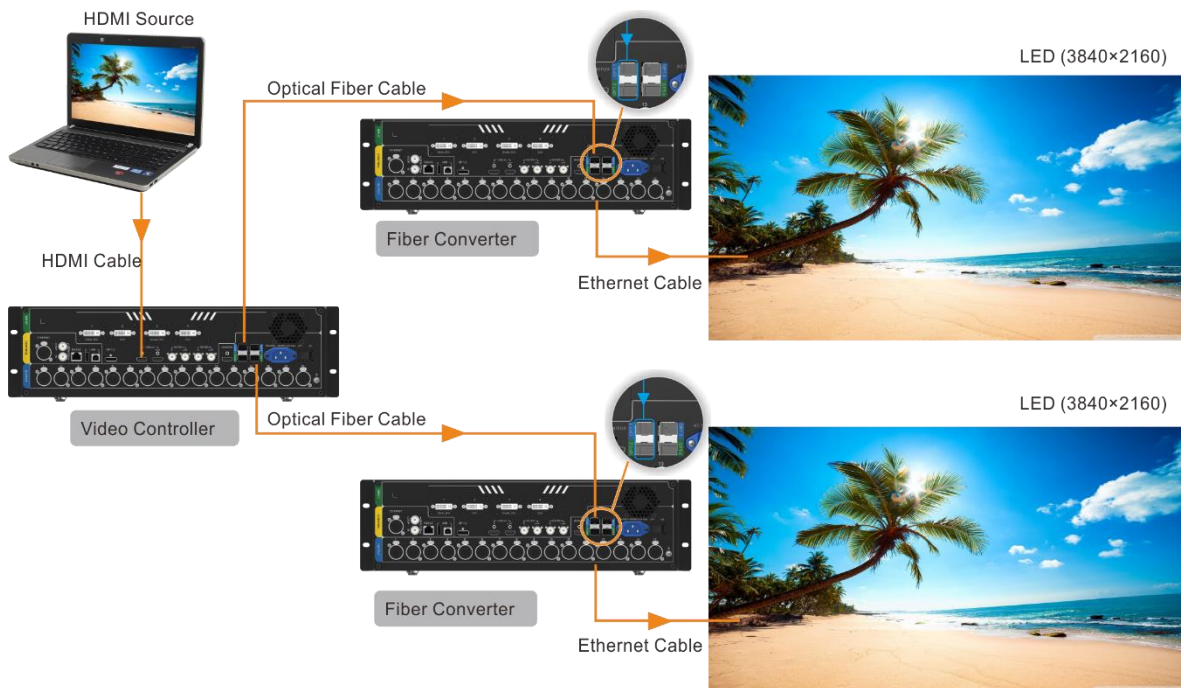


Step 2 Choose **Advanced Functions > OPT Mode > Hot Backup** to set the OPT mode as hot backup.

Copy

Step 1 Perform the hardware connections for copy mode.

Figure 5-24 Connections for copy mode



Step 2 Choose **Advanced Functions > OPT Mode > Copy** to set the OPT mode as copy.

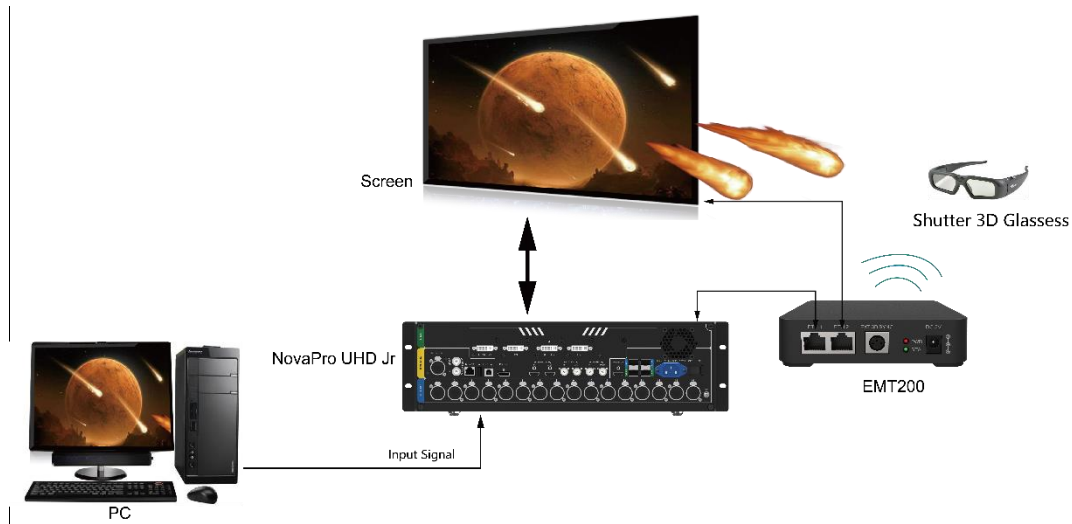
5.8.4 3D Mode

The NovaPro UHD Jr can work with the EMT200 3D transmitter and 3D glasses to provide you with 3D visual experience. For details, please see [A 3D Function User Manual](#).

Note:

Turning on 3D mode will halve the device output capacity.

Figure 5-25 Hardware connections



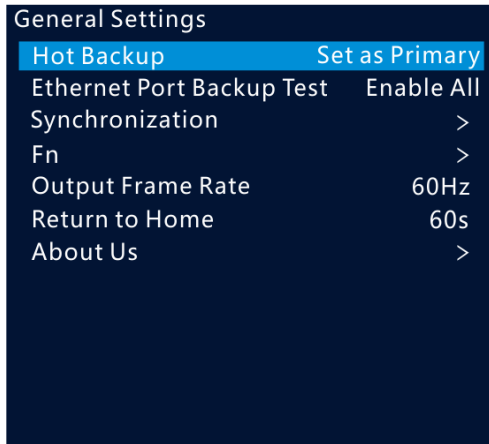
- Step 1 Perform the hardware connections as shown in [Figure 5-25](#).
- Step 2 Choose **Advanced Functions > 3D Mode > Status** to turn on the function.
- Step 3 Select the 3D format. The options are **Side-by-Side**, **Top-and-Bottom** and **Frame Sequential**.
- Step 4 Set the eye priority according to the 3D glasses mode. The options are **Left** and **Right**.
- Step 5 Select **More Settings** to set the following items.
 - Right Eye Start
 - Signal Delay Time (us)
 - Third-Party Transmitter

5.8.5 Self-Test

You can test the device by yourself when the device fails, then feedback the result to NovaStar.



5.9 General Settings

Figure 5-26 General settings



5.9.1 Hot Backup

The NovaPro UHD Jr supports two hot backup modes: **Set as Primary** and **Set as Backup**. Figure 5-23 shows the application for this function.

- Set as Primary: The target Ethernet port on the home screen is highlighted. For example, .
- Set as Backup: The target Ethernet port on the home screen is highlighted and displayed with a small triangle icon at the bottom right. For example, .

When the primary device fails, the backup device will take over the work in real time.

5.9.2 Ethernet Port Backup Test

The NovaPro UHD Jr supports the Ethernet port backup test. You can test whether the pre-stored images, backup Ethernet ports and devices take effect without plugging and unplugging the Ethernet cables.

| Menu | Description |
|-----------------|--|
| Disable Primary | Disable the output of the primary Ethernet port on the current device to test whether the backup port or device takes effect. |
| Disable Backup | Disable the output of the backup Ethernet port on the current device to test whether the output of the primary port is normal. |
| Disable All | Disable the output of all the Ethernet ports on the current device to test whether the pre-stored image or backup device takes effect. |
| Enable All | Enable the output of all the Ethernet ports on the current device to complete the test. |

5.9.3 Synchronization

You can select a synchronization signal to synchronize the cascaded devices.

Step 1 Rotate the knob to select **Synchronization** and press the knob to enter the submenu.

Step 2 Rotate the knob to set the synchronization status and source respectively.

- **Status:** Turn on or turn off this function. It is off by default.
- **Source:** Select the target input source.

Note:

When the input source resolution is changed or the input source cable is replugged, you need to re-set the function. Please turn off the function and turn it on again.

5.9.4 Fn

The **Fn** button on the device front panel can be customized to a **Synchronization, Preset Settings, Freeze, Black Out, Test Pattern, Quick Configuration, Image Color** or **Main Layer** shortcut button.

5.9.5 Output Frame Rate

You can set the output frame rate of the image output by Ethernet port. The range is 23.98 Hz–120 Hz and the default setting is 60 Hz.

5.9.6 Return to Home

You can set the period of time during which the system stays at the current page before returning to the homepage automatically when there is no operation performed. The default setting is 60s and the maximum value is 3600s.

5.9.7 About Us

You can view the following information.

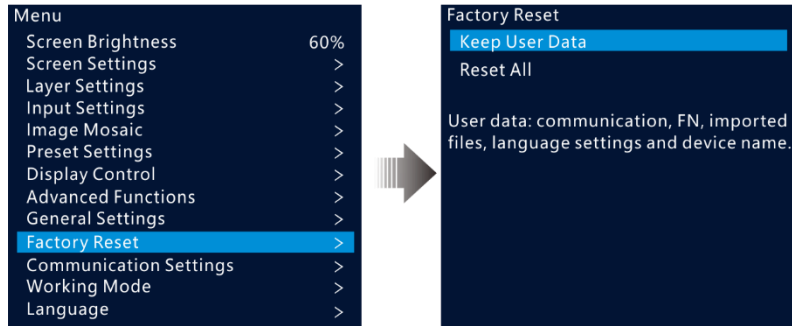
- Device hardware version
- Company website (www.novastar.tech)
- Email address (support@novastar.tech)

5.10 Factory Reset

Factory reset function allows you to reset all the parameter settings of the device to factory defaults after the device update or when you think the parameters are improperly set.

On the main menu screen, rotate the knob to select **Factory Reset** and press the knob to enter the factory reset screen.

Figure 5-27 Factory reset



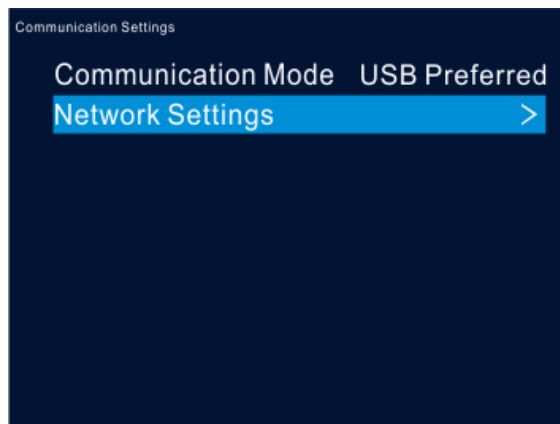
- Keep User Data: Reset the parameter settings to factory defaults, except for the communication, Fn and language settings, imported files and device name.
- Reset All: Reset all the parameter settings to factory defaults.

5.11 Communication Settings

5.11.1 Communication Mode

The device is connected to the PC via both USB port and Ethernet port. The communication modes include **USB Preferred** and **LAN Preferred**.

Figure 5-28 Communication mode



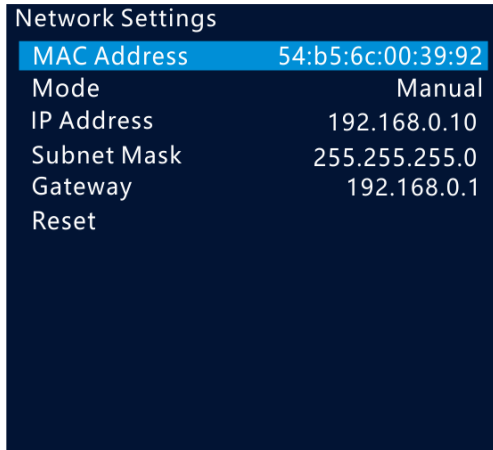
- When USB Preferred is selected, the device communicates with the PC via USB port by preference.
- When LAN Preferred is selected, the device communicates with the PC via Ethernet port by preference.

5.11.2 Network Settings

The network setting modes include **Manual** and **Auto**.

- Manual: Set the device IP address and subnet mask manually.
- Auto: The device reads the network parameters automatically.
- Reset: Reset the parameters to defaults.
- Display the device MAC address.

Figure 5-29 Network settings



Notes:

When communicating with the control PC, the device and control PC must be on the same LAN.
 The IP address of current device cannot conflict with IP addresses of other devices.

5.12 Working Mode

The NovaPro UHD Jr can work as a **Video Controller** (default) or **Fiber Converter**.

Step 1 Press the knob to enter the device menu.

Step 2 Rotate the knob to select **Working Mode** and press the knob to enter the working mode screen to select a desired mode.

- Video Controller: Both Ethernet ports and optical fiber ports are used for output.
- Fiber Converter: Optical fiber ports are used for input, and Ethernet ports are used for output.

Figure 5-30 Video controller mode

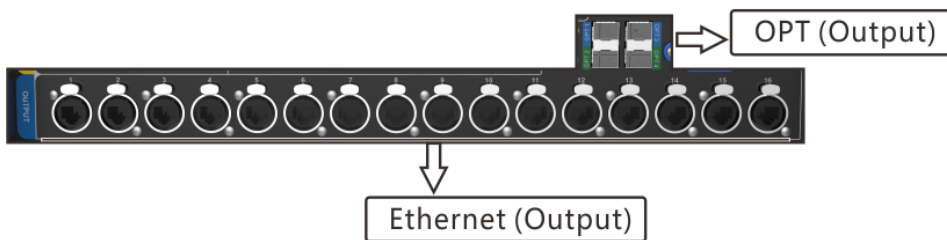
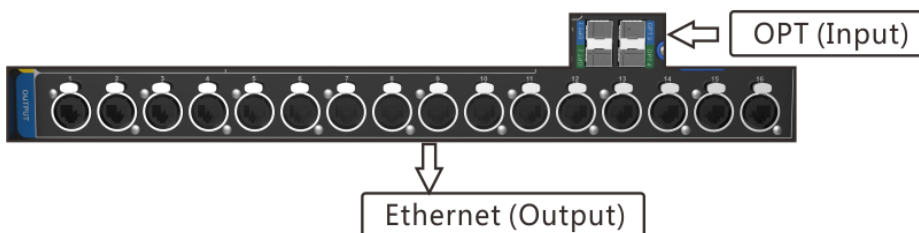


Figure 5-31 Fiber converter mode



5.13 Language

The NovaPro UHD Jr supports both **Chinese** and **English**. You can freely switch to either language.

6 Specifications

| | | |
|----------------------------------|-------------------|--|
| Electrical Specifications | Power connector | AC100V-240V 50/60Hz |
| | Power consumption | 70 W |
| Working Environment | Temperature | 0°C-45°C |
| | Humidity | 0% RH-80% RH, non-condensing |
| Storage Environment | Temperature | -10°C-60°C |
| | Humidity | 0% RH-95% RH, non-condensing |
| Physical Specifications | Noise Level | 46dB (A) |
| | Dimensions | 482.6mm×396.5mm×139.0mm |
| | Net weight | 6.3 kg |
| | Total weight | 13 kg |
| Packing Information | Packing box | 590.0 mm × 270.0 mm × 510.0 mm |
| | Carrying case | 585.0 mm × 265.0 mm × 490.0 mm |
| | Accessory Box | 402.0 mm × 347.0 mm × 65.0 mm |
| | Accessories | 1 × Power cable (EU) 1 × Power cable (US) 1 × Power cable (UK) 1 × Cat5e cable 1 × USB cable 1 × DVI cable 1 × HDMI cable 1 × DP cable 1 × Quick Start Guide 1 × Packing List 1 × Customer Letter 4 × Silicone dust plugs |

A

3D Function User Manual

A.1 For Single NovaPro UHD Jr Unit

- Step 1** Select a 3D video source and connect the source to DVI, HDMI or DP connector of the NovaPro UHD Jr unit.
- Step 2** Connect the NovaPro UHD Jr unit to the EMT200 3D emitter and the LED screen in series via Ethernet cables. Then power on the EMT200 and turn on the shutter 3D glasses that come with the EMT200.
- Step 3** Configure the screen. It should be noted that turning on the 3D mode will halve the output loading capacity of each Ethernet port and the whole unit.
- Step 4** Select the 3D video source format. Select Side-by-Side, Top-and-Bottom or Frame Sequential according to the actual video source format.
- Step 5** Adjust the eye priority. Since the left and right eye image switching manner of the video source may not be in sync with your shutter 3D glasses, you need to adjust the eye priority according to actual visual effect after the 3D mode is turned on. The default option is Left.
- Step 6** Adjust the right eye start position.
1. For a side-by-side 3D video source

If the video source resolution is 1920×1080@60Hz, the right eye start should be set to 960. If the video source resolution is 3840×1080@60Hz, the right eye start should be set to 1920. In conclusion, it is recommended you set the right eye start position to the half of the video source width.
 2. For a top-and-bottom 3D video source

If the video source resolution is 1920×1080@60Hz, the right eye start should be set to 540. If the video source resolution is 3840×1080@60Hz, the right eye start should be set to 540. In conclusion, it is recommended you set the right eye start position to the half of the video source height.
 3. For a frame-sequential 3D video source, you do not need to adjust this parameter.
- Step 7** Adjust the signal delay time. Since the left-right eye switching time of the 3D glasses may not be in sync with that of the screen, you need to adjust the signal delay time according to actual visual effect after the 3D mode is turned on.
- Step 8** Turn on the 3D mode. Then only main layer will be kept and other layers will be closed.
- Step 9** Wear your 3D glasses to enjoy 3D effect. No matter how the main layer size or position is adjusted, it always supports 3D effect.

A.2 For Multiple NovaPro UHD Jr Units

- Step 1** Select the 3D video source uniformly for all units and connect the source to DVI, HDMI or DP connectors of all units.
- Step 2** Connect all NovaPro UHD Jr units to the LED screen in series via Ethernet cables, and connect the EMT200 to one of devices via an Ethernet cable. Then power on the EMT200 and turn on the shutter 3D glasses that come with the EMT200.
- Step 3** Configure the load area parameters of each unit. It should be noted that turning on the 3D mode will halve the output loading capacity of each Ethernet port and the whole unit.
- Step 4** Set the image mosaic parameters of each unit, which will not be illustrated in this document.
- Step 5** Select the same 3D video source format for all units. Select Side-by-Side, Top-and-Bottom or Frame Sequential according to the actual video source format.
- Step 6** Adjust the eye priority uniformly for all units. Since the left and right eye image switching manner of the video source may not be in sync with your shutter 3D glasses, you need to adjust the eye priority according to actual visual effect after the 3D mode is turned on. The default option is Left.
- Step 7** Adjust the right eye start position for all the units to the same value.
1. For a side-by-side 3D video source

If the video source resolution is 1920×1080@60Hz, the right eye start should be set to 960. If the video source resolution is 3840×1080@60Hz, the right eye start should be set to 1920. In conclusion, it is recommended you set the right eye start position to the half of the video source width.
 2. For a top-and-bottom 3D video source

If the video source resolution is 1920×1080@60Hz, the right eye start should be set to 540. If the video source resolution is 3840×1080@60Hz, the right eye start should be set to 540. In conclusion, it is recommended you set the right eye start position to the half of the video source height.
 3. For a frame-sequential 3D video source, you do not need to adjust this parameter.
- Step 8** Adjust the signal delay time. Since the left-right eye switching time of the 3D glasses may not be in sync with that of the screen, you need to adjust the signal delay time according to actual visual effect after the 3D mode is turned on. All units should be set to the same delay time.
- Step 9** Turn on the synchronization function and select the current 3D video source as the sync source.
- Step 10** Turn on the 3D mode and wear your 3D glasses to enjoy 3D effect.

A.3 Notes

1. Turning on the 3D mode will halve the output loading capacity of each Ethernet port and the whole unit.
2. It is recommended you use the 3D glasses within 3 meter distance from the EMT200.
3. The frame rate of the selected 3D video source should be higher than 60Hz.

Copyright © 2024 Xi'an NovaStar Tech Co., Ltd. All Rights Reserved.

No part of this document may be copied, reproduced, extracted or transmitted in any form or by any means without the prior written consent of Xi'an NovaStar Tech Co., Ltd.

Trademark

NOVA STAR is a trademark of Xi'an NovaStar Tech Co., Ltd.

Statement

Thank you for choosing NovaStar's product. This document is intended to help you understand and use the product. For accuracy and reliability, NovaStar may make improvements and/or changes to this document at any time and without notice. If you experience any problems in use or have any suggestions, please contact us via the contact information given in this document. We will do our best to solve any issues, as well as evaluate and implement any suggestions.

| [Official website](http://www.novastar.tech)
| www.novastar.tech

| [Technical support](mailto:support@novastar.tech)
| support@novastar.tech