

## CX80Pro Specifications

<b>Loading Capacity</b>	8192x4320@60Hz		
<b>Input Ports</b>	Input card A • 1×HDMI2.1 (7680×4320@60Hz) • 1×DP1.4 (7680×4320@30Hz) • 4×12G-SDI (8192×4320@60Hz)	Input card B • 4×HDMI2.0 (8192×4320@60Hz) • 4×12G-SDI (8192×4320@60Hz)	
<b>Max Input Width &amp; Height</b>	Preset resolution 7680×4320@60Hz	Max Width 8192 (800-8192) Max Height 8192 (600-8192)	
<b>Output Ports</b>	16×5Gbps Neutrik	2×40Gbps QSFP (Optional)	
<b>Max Output Width &amp; Height</b>	Scaler Mode: Max Width 32768, Max Height 32768 Pixel to Pixel Controller Mode: Max Width 32768, Max Height 16384		
<b>Working Modes</b>	Scaler Mode and Pixel to Pixel Controller Mode		
<b>Control</b>	1G Ethernet. TCP/IP		
<b>Genlock</b>	Tri-level, Bi-level / Black burst		
<b>Input Bit Depth</b>	12bit / 10bit / 8bit		
<b>Adaptive Frame Rate</b>	23.98 / 24 / 25 / 29.97 / 30 / 47.95 / 48 / 50 / 59.94 / 60 / 72 / 75 / 100 / 119.88 / 120 / 143.86 / 144 / 240Hz (Supports any frame rate)		
<b>Thermal Compensation</b>	✓	<b>Image Booster 2.0</b>	✓
<b>No Rectangle Frame Limitation</b>	✓	<b>Dynamic Booster</b>	✓
<b>HDR10 / HLG</b>	✓	<b>Full Grayscale Calibration</b>	✓
<b>Low Latency (&lt;1ms)</b>	✓	<b>Shutter Fit</b>	✓

**Xi'an NovaStar  
Tech Co., Ltd.**

**Headquarter**

NovaStar Park, 3rd Yunshui Road, Xi'an, Shaanxi, 710077, China  
 +86-29-68216000  
 www.novastar.tech  
 Inquiry : info@novastar.tech  
 Support : support@novastar.tech

# 5G & 8K

## UHD LED Display Solution





# VMP CX80 Pro CA50E



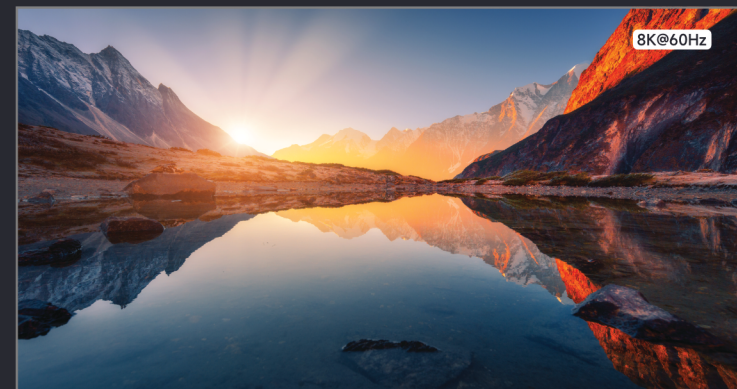
Single-port input with 8K loading capacity, and ethernet output port with 5G ultra-large bandwidth, 1 controller, 16 network cables, easy to load 8K LED screen, greatly simplify 8K system solution chain of ultra-high-definition, high frame rate, high bit depth.

## 5G bandwidth

To control a 8K wall, with traditional 5Gpbs transmission, 16 cables are required.



8K  
video source

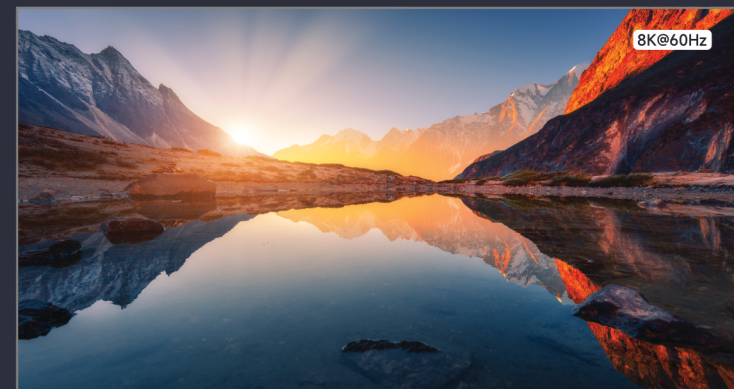


## 1G bandwidth

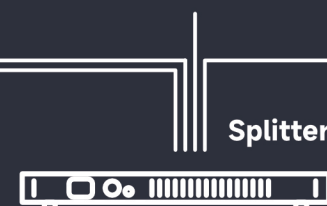
To control a 8K wall, with traditional 1Gpbs transmission, 64 cables are required.



4x 4K  
controllers



8K  
video source





# Flexibility by modular design

The CX80 Pro has multi options of 4K and 8K input ports and adopts a modular design, which can be flexibly chosen according to customers real needs, greatly improving operational efficiency.



## CX80 Pro

Input card options



### Option A

- 4 × 12G SDI (4 × 4096x2160@60Hz)
- 1 × HDMI2.1 (7680 × 4320@60Hz)
- 1 × DP1.4 (7680 × 4320@30Hz)



### Option B

- 4 × 12G SDI (4 × 4096 × 2160@60Hz)
- 4 × HDMI2.0 (4 × 4096 × 2160@60Hz)



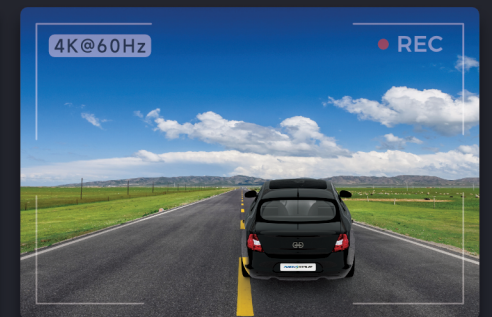
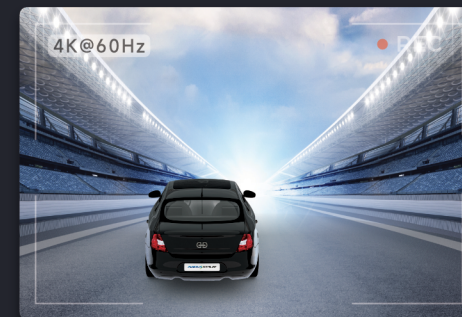
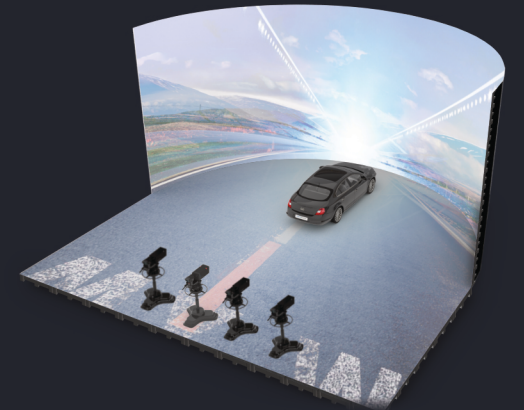
## Flexible frame rate for smoother visuals

Supports 240Hz frame rate, frame multiplexing and adaptive frame rate, providing a super smooth filming.



## 4×4K frame multiplexing, realized with just one unit

The CX80 Pro has an ultra-high 8K loading capacity. When shooting virtual scenes, a single device can perform four 4K@60Hz frame multiplexing, greatly simplifying the system and costs.







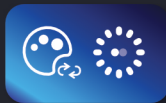
## Adaptive frame rate, free switching

Automatically adapts to video input with variable frame rates ranging from 23 Hz to 240 Hz, and supports custom frame rates with a step as small as 0.01 Hz.



## Shutter fit to eliminate scan lines

Through shutter fit, the shutter speed of the camera is synchronized, and the parameters of the display screen are automatically adjusted to adapt to the exposure time and frame rate of the camera, effectively eliminating scan lines.



## Color adjustment at your fingertips

Curve adjustment and importing of 3D LUT files let you manage color in creative and artistic ways, just like a Hollywood colorist. Color Replacement supports unrestricted color replacement, with minimal impact on other colors. 14CH color correction will precisely adjust of hue, saturation, and brightness of primary, secondary and tertiary colors, with basic adjustment of black and white, ensuring perfect colors that retain their intended beauty.

A large image showing a red sports car on a desert road. The image is split into two parts: 'After 3D LUT CRAZY\_DESERT.CUBE' on the left and 'Original' on the right. Below the images is a control panel for the 3D LUT, including a 'Curves' graph and a 'Color Adjustment' table.

	H(°)	S(%)	B(%)
Red	0.0	0.0	0.0
Orange	0.0	+13.0	+15.0
Yellow	0.0	+19.0	+10.0
Lime	0.0	0.0	0.0
Green	0.0	0.0	0.0
Turquoise	0.0	0.0	0.0
Cyan	0.0	0.0	0.0
Cobalt	0.0	0.0	0.0
Blue	0.0	-10.0	-7.0
Violet	0.0	0.0	0.0
White	0.0	0.0	0.0



Image Booster



Dynamic Booster



Full Grayscale Calibration

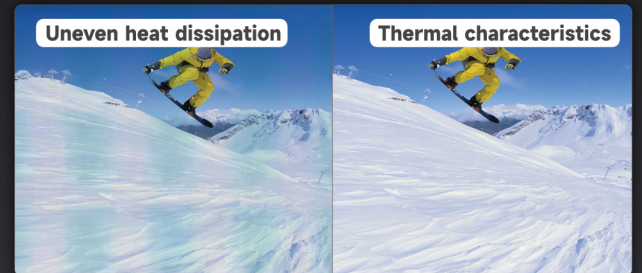


Thermal Compensation

# Stunning image quality with enhanced details

## Long operating time, no color casting

After the LED screen has been running for a period of time, reddish textures appear on the screen due to uneven heat dissipation. Through thermal compensation technology, the thermal characteristics of the LED screen are calibrated, which can effectively solve the color bias caused by uneven heat distribution of the screen.



## Contrast & Black Level for impressive details

Allows independent adjustment of highlights and shadows by contrast and black level, avoiding overexposure in bright content but delivering rich details in dark content.



## Medium and low grayscale remains uniform

Support full gray scale calibration, aiming at the non-linear characteristics of Mura shape under different gray scales, each gray scale has its own calibration coefficient, so that the LED screen is uniform and delicate under different brightness.





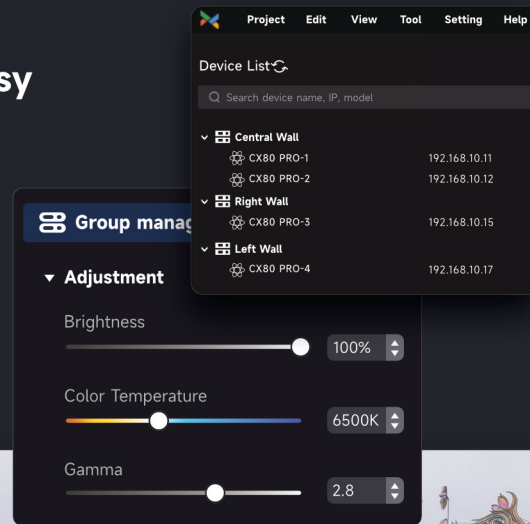
# Communicate with the screen, visual control



Millisecond-level response capability of the 5G system, combined with the new VMP control software, realizes comprehensive visualization of the entire process from device management, screen configuration to display effect adjustment focus on the screen effects the ultimate system user experience.

## Group management made easy

All devices are grouped by screens, making multiple screen management easier and more efficient than before.



## Quick and easy screen mapping

Screen mapping can be done easily on the software canvas with a mouse. Auto detection of connected cabinets and exporting of screen mapping file in advance serve to greatly increase operational efficiency.



## Visualized seam correction

With 5G ultra-large bandwidth data transmission and millisecond-level data response capability. Seam correction can be completed rapidly with an interactive and visualized design. Visually locate and select the seams simply by using a cursor, then directly view the screen to adjust the seams in the software, greatly improving efficiency.





# Comprehensive monitoring guarantee, more secure display

CX80 Pro can realize real-time monitoring of the screen status. The data of the screen is intuitively indicated, and any abnormalities prompt an active alert, it helps users maintain continuous and getting the more reliable operation of the screen.



## Chain monitoring

Real-time display of the running status of the entire chain of the control system, active alarms for abnormal conditions, and intelligent detection of fault points, helping users to locate problems one step at a time, accurately assisting users in quick troubleshooting, allowing peace of mind at the event site, as well as improved system control and stability.



Comprehensive Health Detective



Receiving card Temperature



Receiving card Voltage



Accumulated Error



Controller Condition

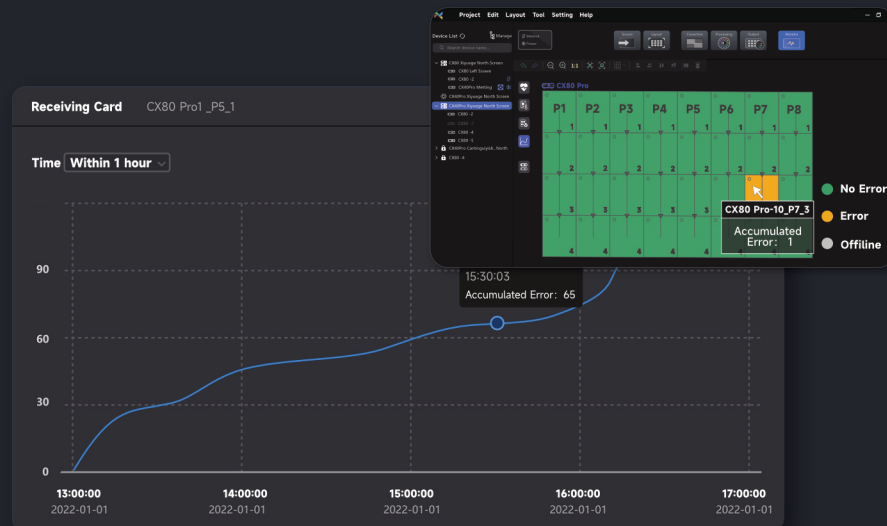


Record output



## Control System Link Monitoring

Real-time display of the running status of the entire control system link, active alarms for abnormal conditions, and intelligent detection of fault part, helping users to locate problems one step at a time, accurately assisting users in quickly troubleshooting, guarantee the event site, and improve the controllability and stability of control system.



## What you see is that you get

Canvas monitor and source preview allow for recognition of screen display status in real time and easy fitting of content to screen.

